

Together we are a community of empowered learners

Term 2 Week 1 2023

## What's on ahead

<b>Thursday 27th April</b>	Anzac Assemblies 9.10am K-2    10am 3—6	<b>Wednesday 3rd May</b>	Schools in Sports Australia
<b>Friday 28th April</b>	PSSA Trials	<b>Thursday 4th May</b>	Assembly at 2pm—Eid item
<b>Monday 1st May</b>	Vision Frames handed out	<b>Monday 15th May</b>	Closing date for OC Applications for Y5 in 2024
<b>Tuesday 2nd May</b>	Dance Groove Nation classes begin		

## Principal's Message

Dear families,

### Welcome back and introducing new staff

I hope you had a restful holiday filled with family fun and time spent enjoying a break from school. Welcome back to all our students and staff to a very busy term ahead. We also welcome some new staff members this term:

- ♦ **Mrs Christine Ghassibe Deputy Principal** – We welcome Mrs Ghassibe who comes to us from Prairievale Public School. A very experienced and talented leader with strengths in curriculum and professional learning. She was successful in winning the position in a highly competitive field. We look forward to having her leadership in our school to support students, families and staff. Mrs Ghassibe speaks Arabic and has a beautiful baby girl Amelia in Kindy. Please say hello.
- ♦ **Ms Jasmin Nand Assistant Principal Special Education** – We also welcome Ms Nand from Whalan Public School who also is an experienced leader and was also successful in winning a position at our school to lead our Support Unit. Ms Nand has a fur baby and comes with a wealth of knowledge and passion in Special Education with a Masters in the field. We welcome Ms Nand to the team.
- ♦ **Mrs Elaine Toa and Mrs Sandra Ristevski** – Join our Intervention Support Learning Team alongside Mr

Bale, Mrs Delic and Mr Munoz. The government has provided funding to employ additional educators who will deliver small group tuition in Numeracy and Literacy. They will be working closely with each stage group to support the learning in our school.

- ♦ **Mrs Rana Mahmoud** – Completed her prac at our school end of last term. We were so impressed that we have asked her to stay on as a School Learning Support Officer.
- ♦ **Mrs Emma MacRae** – Will join us in week 3 to job share with Mrs Amel Kaisher on 3/4 Lilac Thursdays and Fridays.

### Farewell and thank you Mrs Skye Curran

We farewell and thank Mrs Curran who did a fantastic job of leading our Support Unit for term one. She was a strong member of our exec team and a great Assistant Principal working with her team of teachers. Mrs Curran was successful in winning a position at Ashcroft Public School for the remainder of the year. We wish her well in her new endeavours.

## Anzac Day Assemblies

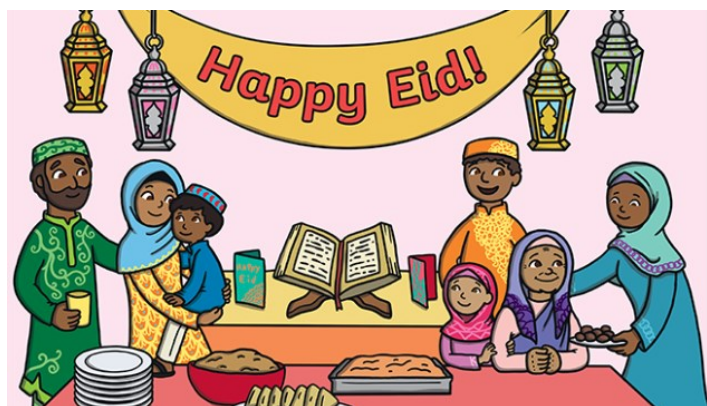
This Thursday we will be holding two Anzac assemblies led by Mrs Mel Jessep and the Student leadership team to commemorate and educate the significance of ANZAC.



## Eid celebrations

Happy Eid al-Fitr

To our students and families celebrating Eid al-Fitr, we wish you "Eid Mubarak! Mrs Rabia Ali and her team have organised a special item for assembly to share her culture and that of many of our students who celebrated the end of Ramadan.



## Aboriginal Education Staff Development Day

Our school joined all other public schools across NSW on Monday 24 April 2023 to carry out professional learning focused on Aboriginal education. School development days are used by schools to build on the knowledge and skills of our teachers, school leaders and school administrative support staff through a targeted professional learning program.

The professional learning had been planned around the unique needs of our school community and will help to sustain positive change and improve both educational outcomes and wellbeing for all learners. We thank our Aboriginal Education Officer Trish Daniel who led the professional learning and we are excited to continue this throughout the year.

I want to thank you for your ongoing support as we work to improve outcomes for Aboriginal and/or Torres Strait Islander students and increase knowledge and understanding of Aboriginal histories and cultures.





## New policies, procedures and framework to keep students engaged in learning at school



The Inclusive, Engaging and Respectful (IER) Schools package was announced in February this year by the then NSW Minister for Education and Early Learning, Hon Sarah Mitchell. It centres on three new policies and procedures and a framework that together set the guidelines for how we ensure all children and young people can learn through public education in a safe and engaging way.

The IER Schools package includes the:

- \* ***Inclusive Education Policy for students with disability***
- \* ***Student Behaviour Policy and Procedures***
- \* ***Restrictive Practices Framework and Restrictive Practices Reduction and Elimination Policy and Procedures.***

With these new policies, we want all students to:

- \* be included in all aspects of school life and supported to learn to their fullest capability
- \* be supported in engaging, respectful, and effective classrooms with positive and inclusive practices
- \* feel welcomed, valued and safe in our schools and classroom

Two of the policies are new: the Inclusive Education Policy; and the Restrictive Practices Framework and policy. Both clarify existing legal obligations, effective, appropriate, and prohibited practices, and the rights of students, parents, and carers.

The Student Behaviour Policy replaces the Student Discipline in Government Schools and Suspension and Expulsion Policy. The key change is the approach all NSW public schools will take to address disruptive or inappropriate behaviour by a student. The duration of a suspension will be reduced along with the number of suspensions across a school year. Every school will be able to draw on the support of a range of staff including behaviour specialists to effectively address

issues resulting in these behaviours in order to prevent future escalations. We will continue to work closely with you and all our families. We are currently working with our Learning and Wellbeing officers and behaviour specialists to support our students and staff.

It does not mean, however, that students who are violent or seriously disrupt the learning and wellbeing of others will be kept at school. Any student who puts the safety of other students, teachers and staff or visitors at risk of harm – may be suspended until it is safe for them to return. We will do our best to work with you to support the wellbeing and learning of all of our students.

The Inclusive Education Policy for students with disability and the Student Behaviour Policy become operational in Term 4, 2022 and the Restrictive Practices Policy becomes operational in Term 1, 2023.

Currently, the school's executive team are reviewing our current approach to all of the areas covered by these policies, and we will share any changes we may make with you throughout the year.

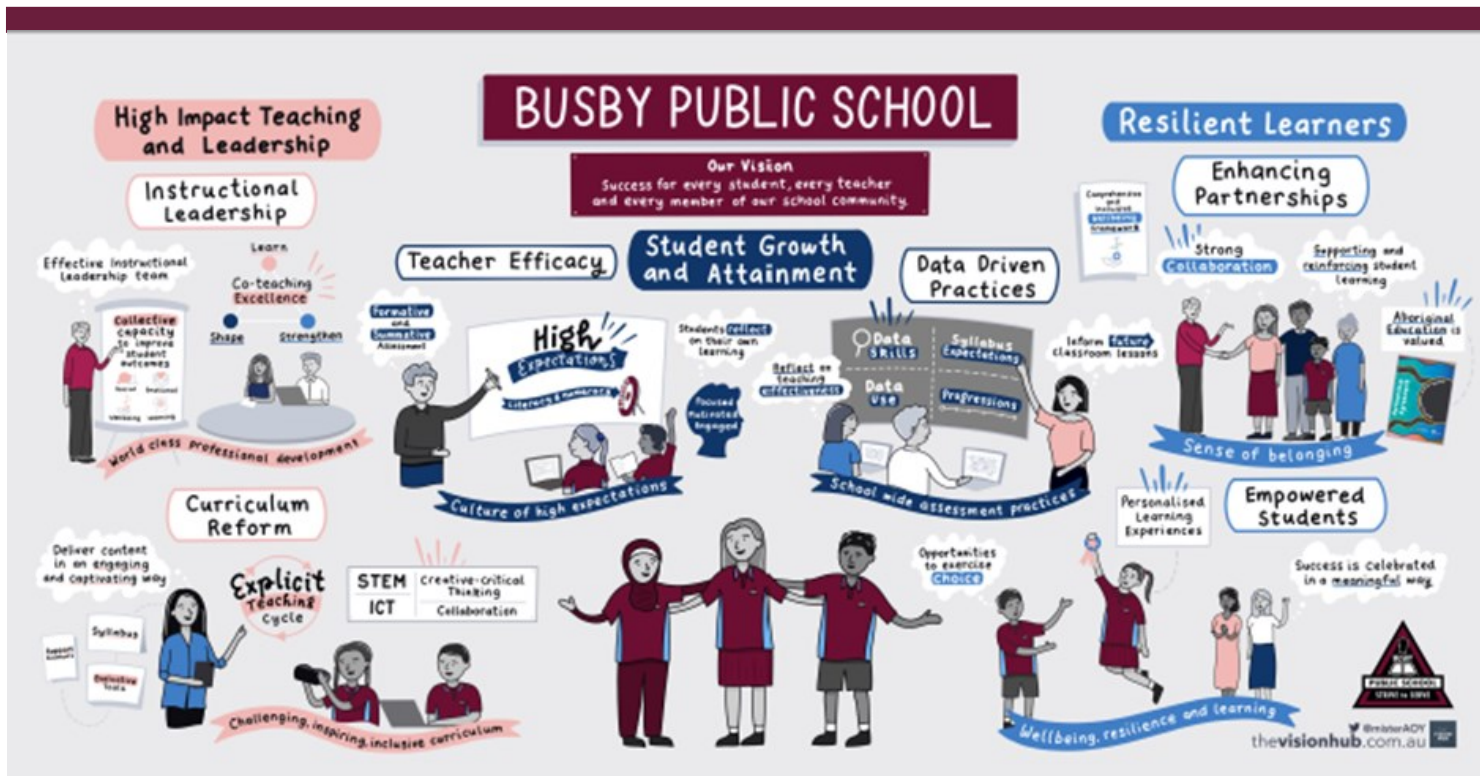
Our school already takes a strong, positive student-centred approach, but we want to work with you to ensure, together, every student has the right support at the right time to help them grow into confident, resilient adults. For more information on these policies, please visit the [NSW Department of Education website](https://www.education.nsw.gov.au).

We also invite our families to come in and talk to us or call if you have any concerns or questions you might have. Call the office and leave a message and one of our executive team will get back to you or send us an email via the school email address.



**We all play a part**

The best education happens when parents and schools work together



## Strategic Improvement Plan—2022—2026

We have been working on developing our Strategic Improvement Plan with more ways we can develop and enhance our school as illustrated above. Any changes made will be shared with our community once finalised.

## Connected Community News—Liverpool Network of Schools

Busby Public School is lucky to be part of the Liverpool Network of schools. This means there is a lot of sharing and working together with other schools in our network area under our Director of Educational Leadership Mr Nick Magriplis.

### **HPGE Connections with Miller and Cartwright Public School**

At the end of last term I met with principals Mrs Selena Gandy of Miller Public School and Mrs Liz Harris to share plans for the following projects. A High Potential Gifted Education group for our Creative students will be set up with students selected from all three schools to attend art classes to extend their abilities. Sporting opportunities are also planned for our mainstream and support unit classes.

### **Support and Thank you to Liverpool West**

Principal Lucy Martin and her school who has generously donated school furniture to our school as they have moved into their brand new school building! We are grateful for the equipment and support.

Especially our school library!

We were also very lucky to get a tour of the new building with state of the art designs incorporating Aboriginal culture, learning hubs in a multi-level building. A beautiful school in the heart of Liverpool. Mrs Lucy Martin has offered her school facilities for our community events and professional learning.

Mrs Lucy Martin's young granddaughter Cecilia Louise attends our school and is a very bright and positive Kindy student from a strong line of educators! Thank you for choosing us to look after your grandbaby!

Liverpool West Public School and our school will be looking into plans for shared Multicultural events in the future. We will be calling on our families to help us with this!

### Final word

As a mum who is still fighting to put my own kids to bed nearing 11pm and school is tomorrow! I am looking forward to seeing all or our students return happy and ready for Term 2!

**Ena Lakisoe—Principal**